



Paatlidun Safari Lodge

A Unit of Templeton Suites & Resorts
Village Bhakrakot, Mohaan Distt. Nainital - 244715
Email : contact@paatlidun.com
Call : +91 9999 338 886 Visit : www.paatlidun.com

EXPLORE THE UNEXPLORED



THE BRAND _____

Templeton Developers bring you Paatlidun Safari Lodge, the luxury at the heart of India's vernacular traditions. We believe that the opulence you desire shouldn't isolate you from exploring the local culture. Luxury doesn't have to insulate you from soaking in rich, vibrant and wonderfully varied traditions; rather, the two can go hand in hand. The indigenous architecture, decorated with traditional art and handicrafts and imbued with a sense of local culture to give you a taste of authentic native life in unmatched luxury.

At Paatlidun Safari Lodge, we are re-imagining what luxury travel can look like, the infinite possibilities and enthralling experiences we can offer our guests.



POWER OF SUN

This mighty Force of Nature commands the winds and the tides, where the sunflowers gaze and when the stars come out to shine. In the heart of the jungle, man and beast sway together to the rhythm of the fireball in the sky.



ANCIENT WISDOM

Saraswati's feet tread gently upon Mother Earth. The Hindu Goddess of Learning bestows wisdom and grace, the wisdom to learn from Nature and the grace to preserve the eternal Circle of Life.



ARCHITECTURE

PAATLIDUN displays traditional Kumaoni motifs- woodworks, stone masonry, a verandah with a tulsi chabutra and signature black slate tiles. Aipan paintings on glass partitions colorful Garhwal carvings on entrance doors lends a personal touch.



TRADITION BEYOND TIGERS

The yellow stripes are enthralling; but if you tune into the surroundings, you'll be pleased to discover an equally wondrous world of creatures big and small, whirring around you in dazzling colours, quirky habits and jaunty plumes.



LOVE THE OUTDOORS

Embrace the outdoors in Corbett National Park; race the wind and savor the thrill of adventure as you foray into the forest and encounter birds and beasts. An adrenaline rush is a jeep safari away.



INDULGE YOUR SENSES

From the quiet stillness of mango groves to the sinful indulgence of your private spa, the sting of icy river water to the frantic flapping of a hummingbird, you will spiral into a sensory explosion like never before.



DECADENCE IN THE WILDS

Satiny-smooth luxury in the heart of the rugged wilds-now that is one sensuous juxtaposition you'll find hard to resist. Succumb to earthly pleasures in the lap of opulent splendor.



UNMATCHED SOLITUDE

70 exclusive designed villas & cottages, intuitively and thoughtfully positioned in an unending expanse of 22 acres, nestled among towering trees to allow undisturbed quietude, some well-deserved alone time with Nature and your loved ones.



NATURE UNLEASHED

When you live at Paatlidun, you live at the edge of the wild. There are no fences separating the sunlit forests of Sal that begin at your backyard in a clamor of birdsong, greenery and the scent of wood.



OUR STORY

The sensory pleasures of Jim Corbett National Park are best explored slowly with Paatlidun Safari Lodge. This Luxury Wildlife Lodge captures the essence of unspoilt nature, weaves it with Kumaoni hospitality and brings you the plushest retreat that you will encounter in the untamed wilds. This is as close as it gets to the Jim Corbett Tiger Reserve.

OUR PROMOTERS



Nestled in the unfiltered flora and fauna of Jim Corbett, Paatlidun Safari Lodge is the brainchild of Mrs. Sonal Agrawal and Mr. Neeraj Agrawal.

Their knack for giving personalized care and hospitality to all their guests runs in the family and they have left no stone unturned in managing & ensuring that all the guests staying at their bespoke luxurious property get a taste of the nook and corner of Corbett at its best.

When it comes to the property, it is a perfect blend of luxurious lodges and breath-taking views accompanied with warm hospitality and an

authentic wildlife experience. With an aesthetic and luxuriously decked property, you enjoy both the worlds of luxury and dense forests as you step out of it.

This property is now being extremely well managed by their Son Aakarsh Agrawal, Daughter in law Rishita S Agrawal and Daughter Akshara Agrawal.

Come and experience luxury and nature at its best with the Agrawal family at Paatlidun Safari Lodge.

IMMERSE IN TRANQUILITY



WITNESS THE BEAUTY OF NATURE

FLORA & FAUNA

The rich biodiversity of the steamy Terai leaves even the casual observer awestruck. From the sharp whiff of lemon grass to the delicate fragrance of wild jasmine; from a velvety-soft rose petal to the rough texture of weathered bark, from the clumps of towering of elephant grass to the leafy shade of luscious mango and litchi trees- when your senses tailspin in a sensory explosion, you know you've arrived at Paatlidun Safari Lodge.



Even in the dead of night, it's never quiet here: if you listen closely, you'll hear the low whirr of crickets and cicadas sulking in the bushes and wild mushrooms sprouting on tree stumps.

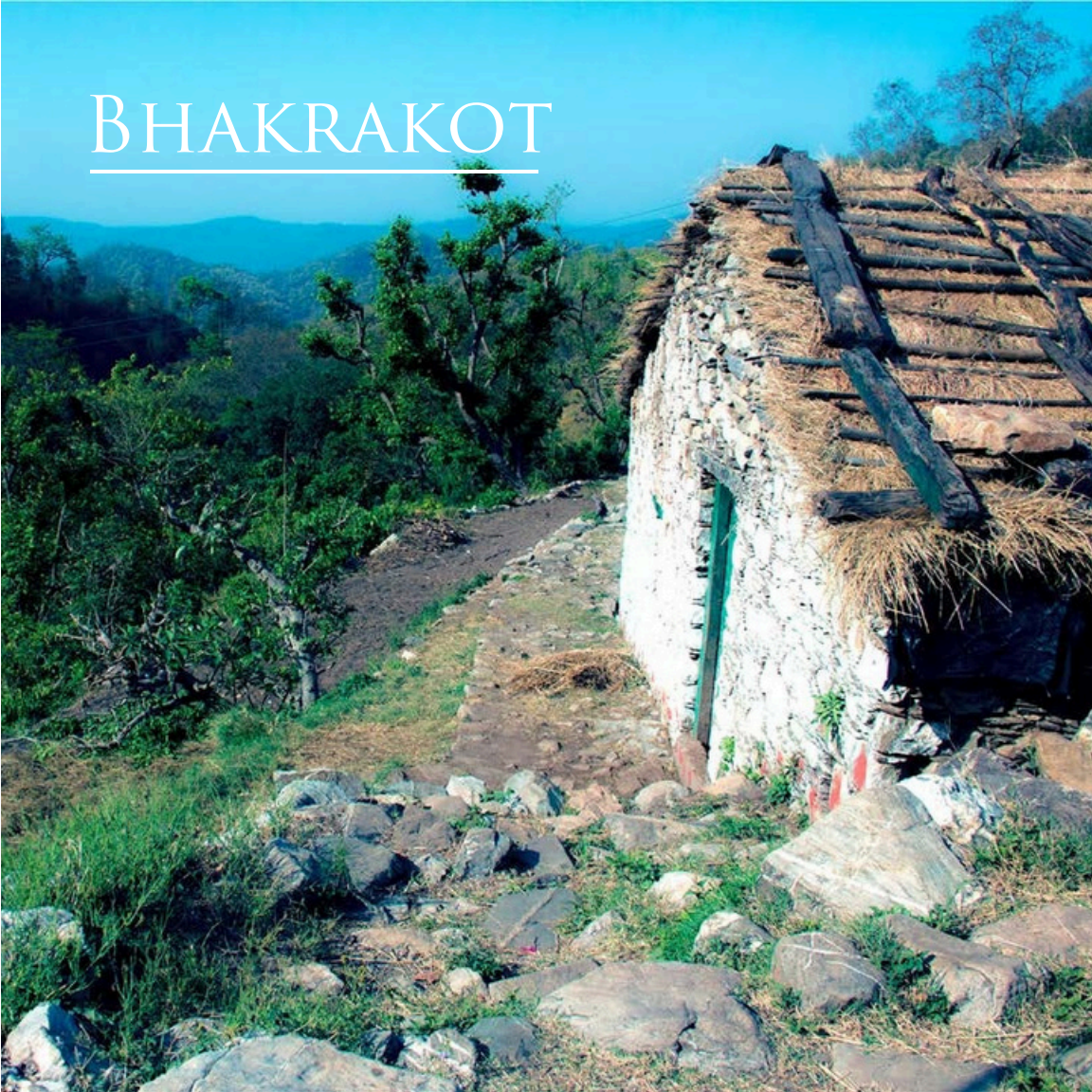


MOHAAN - THE RECEIVING AREA _____

Situated 2.2 km before PAATLIDUN SAFARI LODGE, you break your journey in this cheerful outpost that is tastefully decorated with shoots of yellow tiger bamboo, sunflowers and potted plants. While you freshen up, your luggage is transferred to the Lodge and check in formalities completed. Sip a chilled drink and relax on the rooftop deck, overhanging with boughs and leaves. You'll be glad for the break it mentally prepares you for the last leg of your journey, an exhilarating session of off-roading on a 45 degree montain incline.



BHAKRAKOT



A HIDDEN HAMLET



Tucked deep in the woods, about 22 kms uphill from Ramnagar, is the quaint and quiet village of Bhakrakot Hidden high up in the Shivaliks. This is a world removed from the dust and noise of the plains below. A magical forest path winds its way through scented forests of Sal and roars up a thrilling mountain stretch at a 45-degree incline, to bring you to this enchanted little village.

Paatlidun Safari Lodge is located at one end of this picturesque village, sharing its boundary with the Corbett Tiger Reserve, which accounts for the rich wildlife, flora and fauna.

A 15-minute walk from Paatlidun Safari Lodge on the higher reaches of the village, you can see traditional Kumaoni homes scattered on the hill slopes. The mud and brick walls, wood-work and trademark black slate roof inspired from these houses will make you feel right at home in the villa-suites of Paatlidun.



THE LODGE



Spread over a staggering 22 acres of forest in the village of Bhakrakot, Paatlidun Safari Lodge is an experience in itself. A place where nature and wildlife reign supreme. There are 70 uniquely designed villas & cottages : Lavish Luxuriant but with unmistakable earthy undertones.

A strong local Kumaoni flavour is imbued in these vintage villas, named after the months of the Hindu lunar calendar and the two sections of the lodge (Kosi Bakhai & Ramganga Bakhai ; "bakhai" is settlement) are named after local rivers. Our Bush Dinner invites you to stretch your date with the thrilling outdoor. Mud houses are a recent addition to the list of must-see sights for travelers.



Paatlidun with its vast, open spaces is a breath of fresh air after the confined living spaces of the concrete jungle. At Paatlidun, you can return to simple living, potter around in our vegetable gardens or simply soothe your nerves in the calm of nature.



THULKUDI - THE BRIEFING POINT_____

This vantage point gives you a bird's eye view of the scenic landscape in this part of the Shivaliks. Standing at the rooftop balcony, you can see the Outer Himalayas rising in the North, river Kosi flowing from the East to the South and rooftops of villas peeping out from tree cover: This is a good place to orient yourself with the lay of the land, collect binoculars, your personal walky-talky and some well-meaning advice on not to venture out alone after dark in Kumaon. Thulkudi means 'big house' and indeed it's designed like one, decorated with local handicrafts. At night, you can gaze at the diamond-studded sky with the telescope and spotting scope stationed here or unwind in the breezy rooftop pavilion.



RISYA - THE RESTAURANT_____

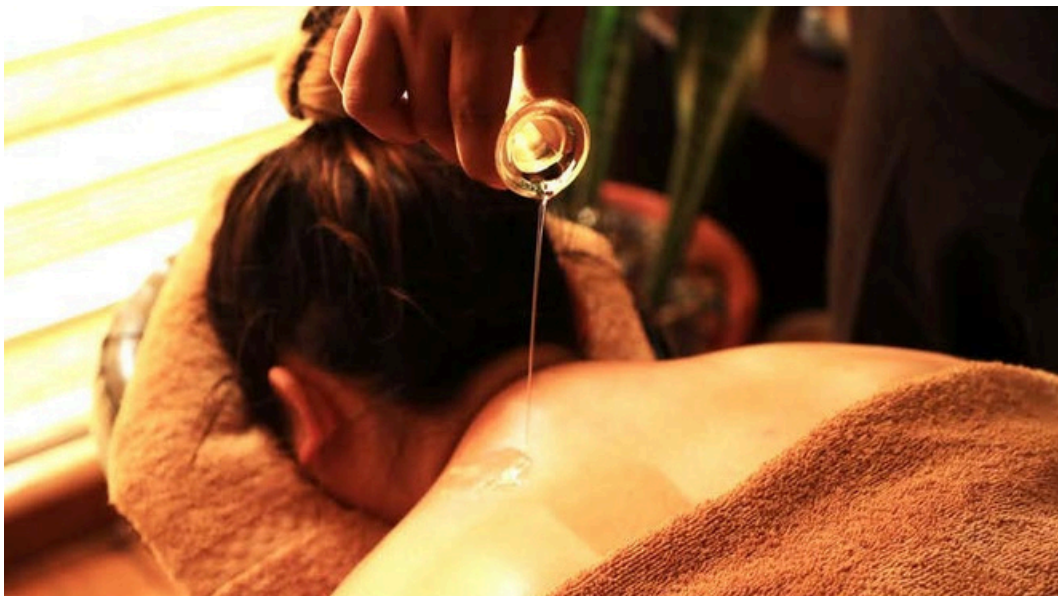


Feast your senses as you feast on authentic local delicacies and all-time favorites whipped up by our marvelous chef at Risya. Follow the delicious smell wafting in the air and the restaurant will suddenly pop into view from behind a thicket of tall elephant grass.



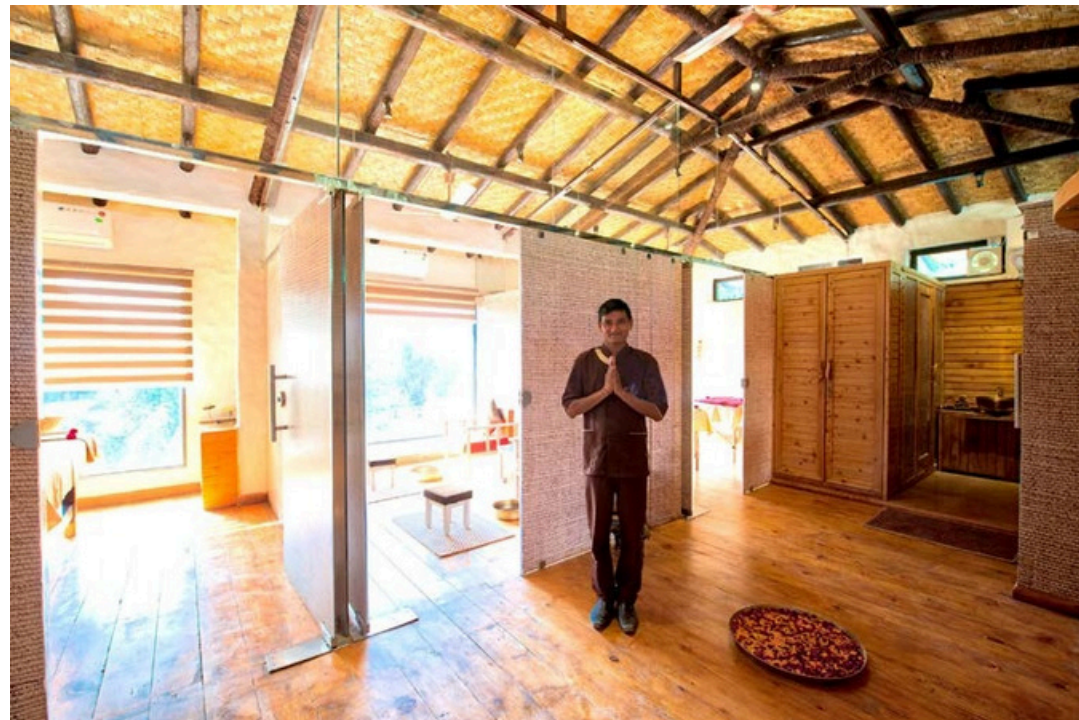
THE CHAKH





BRAHMAKAMAL- THE SPA_____

BrahmaKamal, the spa at Paatlidun, believes in pampering your senses-all of them. This elegant yet earthy Spa is the plushiest wellness retreat you'll encounter in the untamed wilds. Inspired by the rare Lotus that flowers in the highest Himalayas, it echoes Paatiidun's philosophy of seamless integration with Nature. Our nurturing therapies are fraught with ancient knowledge and the goodness of natural ingredients. Elements of the forest like essential oil of Lavender, Lemon grass, Rose oil and Ylang Ylang are combined with centuries old body care rituals to create our signature treatments.



CHAHAPANI

It's a little wooden stall surrounded by a bench and tree stumps for stools, carpeted with burnished autumn leaves rustling underfoot. It looks deserted but if you return late in the afternoon when the sky is burnt orange and the copse is bathed in a dazzling autumn-golden glow, you'll be greeted by our beaming Dhabawala and the unmistakable aroma of tea leaves boiling in water.





KHILAD - ACTIVITY ZONE









MUD HOUSES



The mud houses are another new attraction that are sure to swoon the travel buffs. The soothing and cooling effect of the mud not only gives you an aesthetic experience but also makes you feel like being in the lap of nature. Come and experience a rejuvenating experience closer to the nature.



JUNGLE COTTAGE WITH JACUZZI



These cottages come with their own sit out area, a star window at the sitting area in your bedroom and a bathroom with the best multifunction Jacuzzi. Also very contemporary, the cottage is spread over 750 sq. feet. These 6 cottages come with a style that matches traditional culture, luxury and wildlife and are specially named after the best birds found in the region of Jim Corbett National Park.



HILL VIEW TERRACE VILLA WITH JACUZZI



A sanctuary of elegance and comfort, these expansive villas are designed to elevate your experience amidst the pristine wilderness. Spanning 1,000 sq. ft., they offer an exquisite blend of luxury and nature, perfect for those seeking both adventure and tranquility. Each villa boasts a private terrace with panoramic hill views, providing an idyllic setting to unwind, bask in the serenity, and witness breathtaking sunsets.

The interiors are thoughtfully crafted with a modern aesthetic while retaining a touch of rustic charm. The spacious bedroom, featuring plush bunk beds, invites you to relax and reconnect with loved ones. A signature star-gazing window frames the enchanting night sky, allowing you to experience the magic of the wilderness from the comfort of your villa. The lavish bathrooms are equipped with state-of-the-art multifunction Jacuzzis, providing an indulgent spa-like experience to rejuvenate your senses. Designed to accommodate up to four guests, these villas are curated with every detail to offer an unforgettable and extraordinary stay, blending comfort, style, and nature in perfect harmony.



LUXURY VILLA WITH PRIVATE POOL

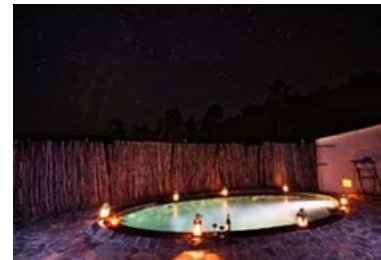
Built on a sumptuous 1750 sq. feet, the 4 Luxury Villa with private pool are designed to reflect Paatlidun's philosophy of embracing the outdoors. So you'll see large star windows in every room that frame the steamy outdoors. A window is even positioned directly above the master bed so you can have unhurried conversations with Nature. It's aptly called the 'Star Window' because it lets you gaze at the diamond-studded sky when curled up in bed. In the morning you are kissed awake by the warm rays of the sun as they move over your bed.



Accompanied with plunge pools, You can also savour the outdoors in your private verandahs and sit outs. A weathered cane fence encloses the large poolside courtyard and gives you just the right blend of privacy and the exotic wilds. The rooms also have an attached living room and private sitout area that overlooks the forest and gives you an essence of the wildlife in its most authentic way



PREMIUM POOL VILLA WITH SKY BED



This well-appointed suite is a seamless symphony of indoors and outdoors. The large, airy spaces extend into unique sit outs and private veranda and courtyards. The enchanting, sky bed on the roof lets you sleep under the open night sky, studded with stars. Swimming pool with regular water, overlooking mountains and nature, with depth of 4.5ft. (built in 2200 sq.ft.) Private verandahs seemingly let the jungle right in while the secluded courtyard in the front adds a charming, rustic appeal. Each V-suite has its own dipping pool and sunbeds – the perfect way to unwind after a safari in the jungle. There is an open air shower in case you fancy a bath al fresco; wooden chaise lounge chairs in your backyard invite you to put your feet up and enjoy a sundowner to the sound of chirping crickets.

BUSH DINNER



Darkness wraps the Forest in an enchanted beauty- trees are bathed in silvery moonlight, phosphorescent glow worms shine their tiny bundles of light and owls hoot happily, greeting their nocturnal friends that are slowly stirring awake all over the jungle. It's hard to wrench yourself away and retire indoors when the night's adventures are only getting started.

At Paatlidun, you don't have to! Our Bush Dinner invites you to stretch your date with the thrilling outdoors, long after the moon has climbed high up in the sky. A royal feast awaits you in the open bush under a star-spangled sky. Scrape back benches placed on the leaf strewn forest floor and settle down at a long wooden table for the treat of a lifetime.

GROWING & SAVORING A TASTE OF NATURE'S PUREST FORM _____

What's better than cooking in a lush green organic garden while enjoying the mystic view of the nature around? This activity makes our guests cook some freshly grown vegetables from our organic garden and enjoy wholesome meals that are too hard to resist. This fresh cooking experience is one of its kind as the guests gets to make the meals themselves and add flavors, just how they want it. This personalized cooking activity brings the families closer and also gives a sense of belongingness to one another. Our organic garden is nothing less than a visual delight to the eyes.





KUMAONI

"Kumaon" – A Region In The State Of Uttarakhand also originally named as Dev Bhoomi (Land of God), Is Blessed With Wide Nature Scenario And Misty Mountains. Kumaon Is Also The Of Spoken Administrative Region Uttarakhand, Commonly Language Is Hindi The Native Language Of Kumaon Is Kumaoni Language. It Is Surrounded By Tibet On North, Nepal On East, Uttar Pradesh On South And Garhwal Region On West. The Region Of Kumaun Is Bounded Of Himalayan Mountain Ranges, With Two Sub Mountains Namely Terai And Bhabhar. A Good Amount Of Kumaon Region Is Deep Forest Which Is Fully Under The Control Of State forest management. Majority Of The People Believe Hinduism In Kumaon Region.



MOUNTAIN DRIVE

There's nothing quite like waking up in the mountains, except of course, waking up in the mountains to a stunning view and sumptuous breakfast. Early in the morning, when it's still dark outside, we pack a picnic breakfast for you and drive you to the ridge at the far end of the Resort. The crisp mountain air will jolt you awake as you jolt along on the 4WD. But what will truly leave you wide-eyed in wonder is the fluid panorama that plays out before your eyes as the first rays of the sun shoot into the inky blue sky, the horizon changes colour to a deep mauve. Then it is shot with rosy hued streaks of pink until it slowly thaws into rich, full-bodied saffron.



Admire the view while you sip hot coffee served on the bonnet of the 4WD and watch the stars pop and vanish one by one. The sun then peeks out from behind the treetops, igniting the long blades of grass and silhouetting the hills. Feast your eyes as you feast on the mouth-watering spread from your picnic basket. Sink your teeth in cheesy croissants, fresh strawberry jam and crisp wafers. From your vantage point you have a bird's eye view of the surrounding area. Never again will you have an experience that truly brings to life the adage, 'Breakfast like a king'.



DIVE DEEPER INTO NATURE WITH
OUR NATURALIST GUIDED RESORT



KOSI RIVER

During this picnic, the guests get to enjoy riding in an open jeep and witness the most scenic views around the river. They also get to deep dive into the history of the region and culture as the local guide walks them through. This activity is duly hailed and loved by all our guests as it is nothing less than experiencing the beauty of nature in its most unfiltered version.

During this picnic, the guests get to enjoy riding in an open jeep and witness the most scenic views around the river. They also get to deep dive into the history of the region and culture as the local guide walks them through. This activity is duly hailed and loved by all our guests as it is nothing less than experiencing the beauty of nature in its most unfiltered version.





EXPLORE THE WILD



EMBRACE THE ADVENTURE
& DISCOVER THE BEAUTY
OF WILD

SCOUT FOR PREY _____



A BIRD WATCHER'S PARADISE _____

Celebrity Visits



Eijaz Khan



Namita Dubey



Pavitra Punia



Suresh Raina & Family



Sanya Malhotra



Vivek Oberoi & Family



Rana Dagubatti



Shefali Bagga



Gaurav Khanna &
Akanksha Chamola



Jaya Prada

Celebrity Visits



Dr Kumar Vishwas



Surbhi Chandna



Milind Soman



Ritu Shivpuri

PAATLIDUN
SAFARI LODGE
A TRADITION BEYOND TIGERS
CORBETT TIGER RESERVE

presents



Host the
Perfect Event



HOW TO REACH



By Air

Towards Northern India and Nearest Destination for International Flights would be Indira Gandhi Airport (Delhi) The nearest Domestic airport from Jim Corbett National Park is at Phoolbagh, Pantnagar (50 kms away). Pantnagar is 72 kms away from Ramnagar. Taxis are easily available from the domestic airport to Ramnagar. The nearest International Airport from Jim Corbett National Park is Indira Gandhi International Airport in New Delhi (295 Kms).



By Road

From Delhi it takes approximately 5-6 hours to reach Ramnagar. However, Jim Corbett National Park is another 12 kms away from Ramnagar.

Driving Directions from Delhi to Jim Corbett National Park.

Delhi (take NH 24 via Hapur Bypass and Gajraula) -> Moradabad (take Moradabad Bypass) -> Thakurdwara – Kashipur -> Ramnagar – (NH 121)



By Train

The nearest railway station from Corbett National Park is Ramnagar (12 Kms from the Park). Ramnagar is directly connected with major cities of India via Indian Railways Network. Major train connecting Delhi and Ramnagar is The Ranikhet Express (15013) which runs all 7 days. It departs from Delhi at 10.35 P.M and reaches Ramnagar at 5.15 A.M the next day. Ranikhet Express (15014) begins from Ramnagar at 8:40 P.M and reaches Delhi at 4 A.M next day. You can look for more trains on this route and check daily schedule of trains on the official website of the Indian Railways.

